

THALES

ARAMIS Modules – Dispatching Data and railML®

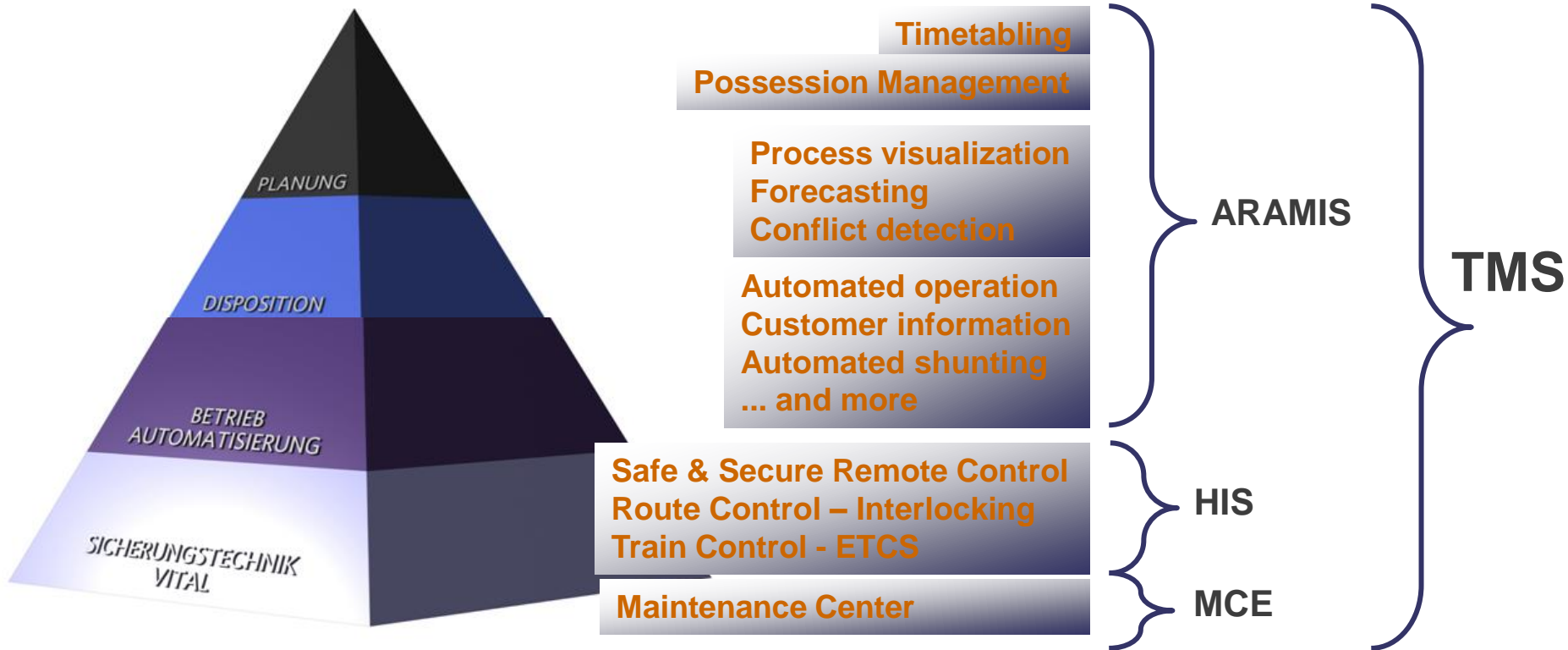
26.04.2022
HEIDRUN JOST

www.thalesgroup.com



Railway Operation – abstract view

System model



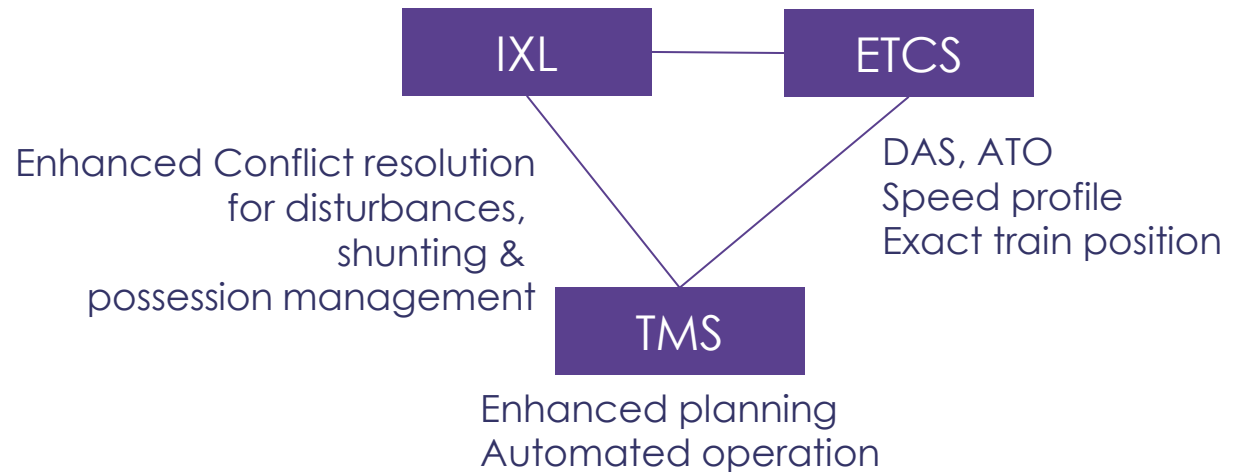
> **ARAMIS:**

> **Advanced Railway Automation, Management and Information System**

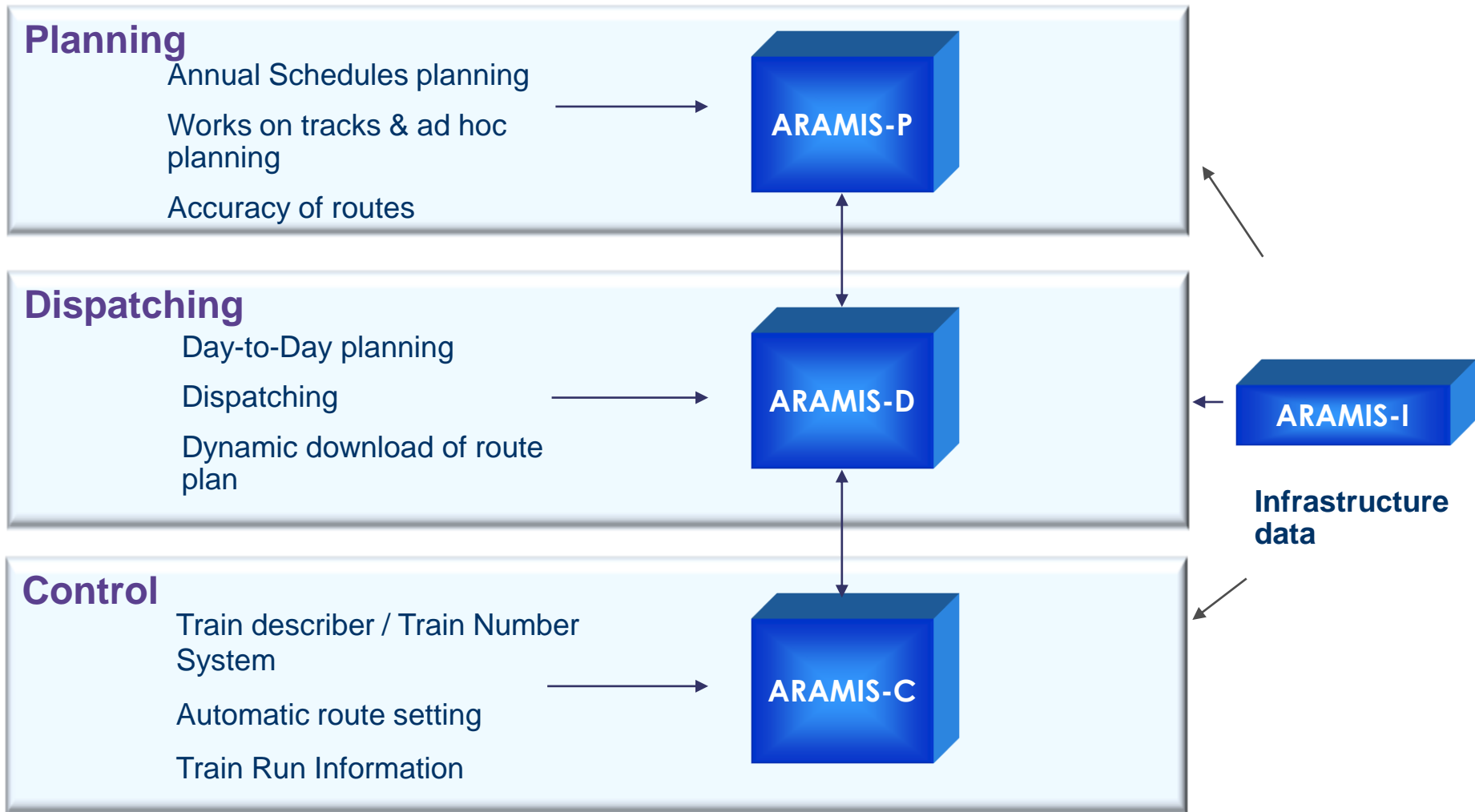
TMS is Core of Signalling

TMS enables higher capacity and better workflow

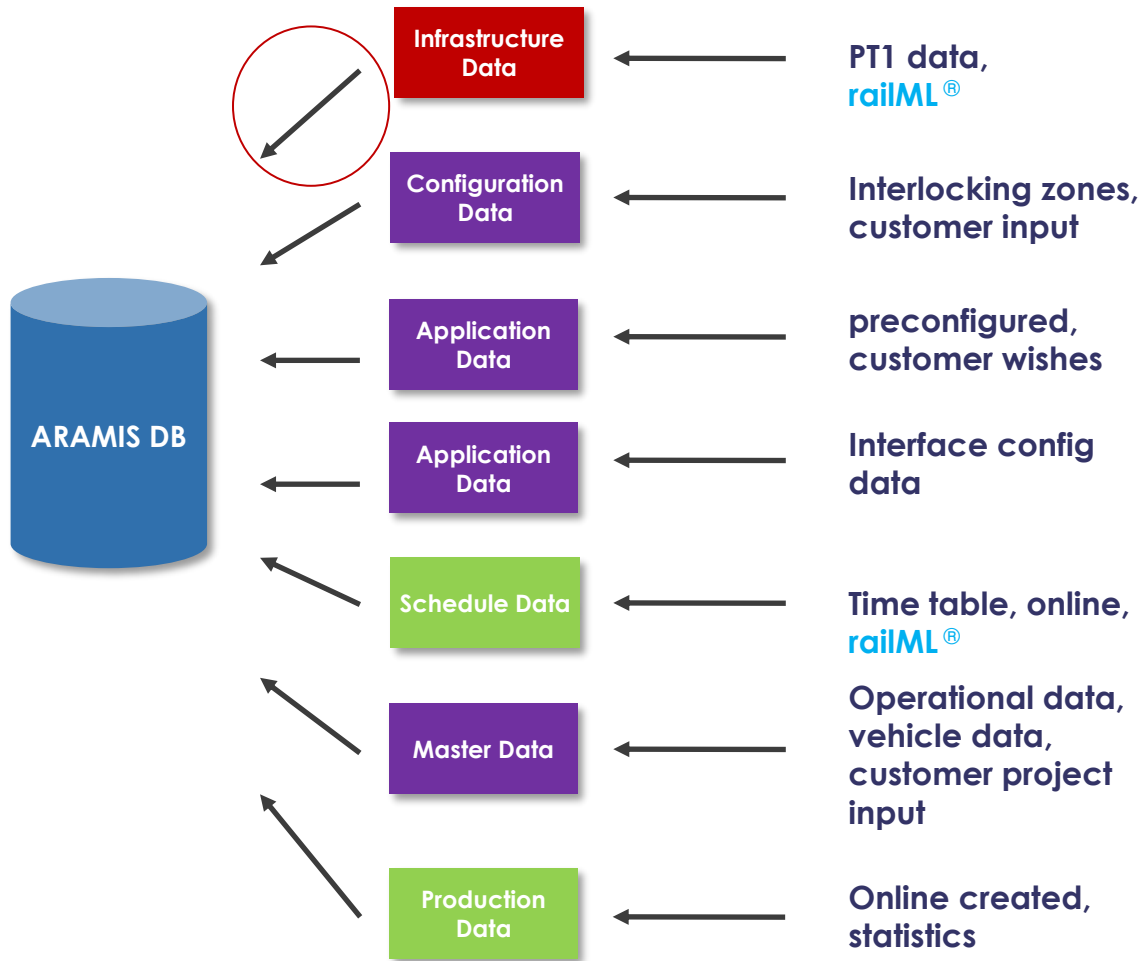
- Enhanced conflict resolution strategies
- Take advantage of more block sections ETCS L2/L3 (virtual block)
- Take Locomotive drivers in the loop
- Take “person in charge of possession” (picop) into loop



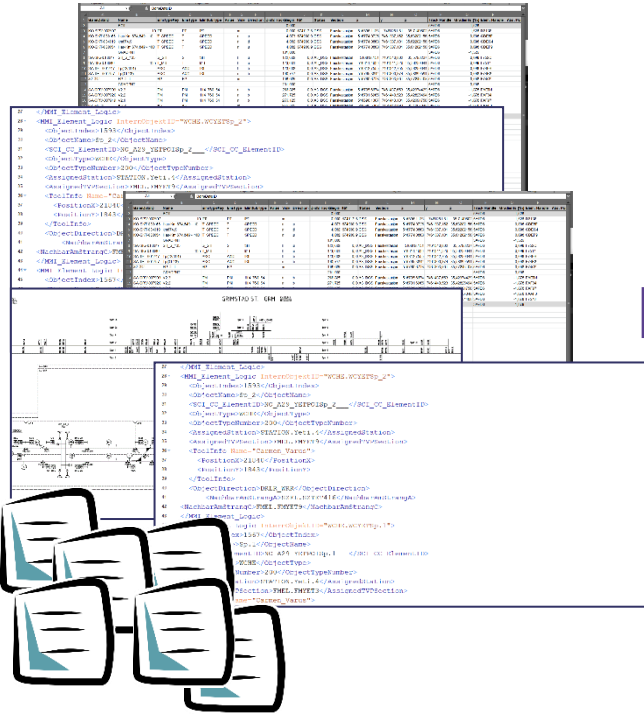
ARAMIS main modules



ARAMIS Data



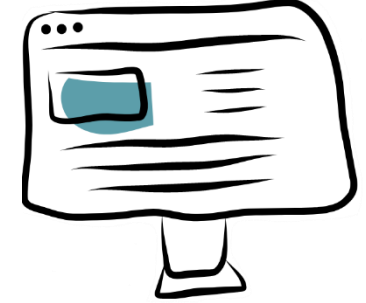
- Initial deployment requires additional configuration data which is specified by customer or by Thales (basic system configuration)
- ARAMIS/DB means are needed to prepare such data
- ARAMIS-I covers in general **infrastructure data** received from DMT for initial deployment, during operation planning, extension business
- Remark: not all table classes of ARAMIS are shown here



!?!?!?

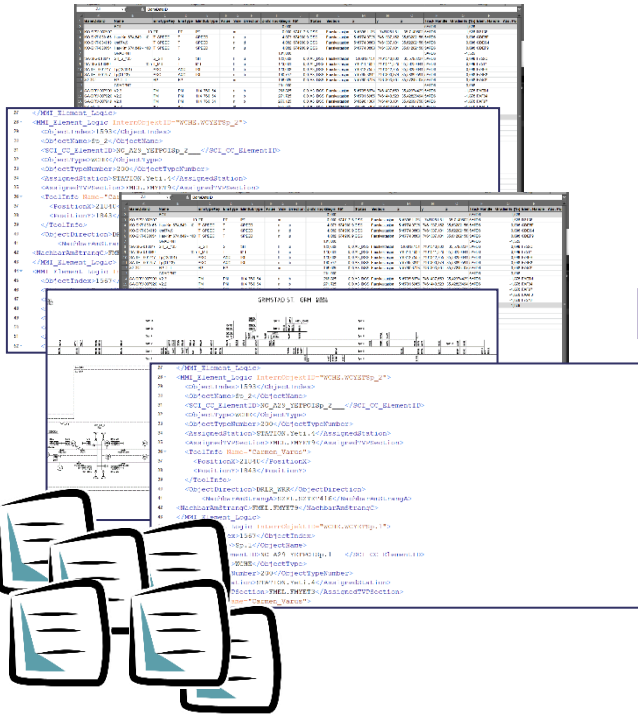


Data Engineer



ARAMIS-I

Goal for data engineering



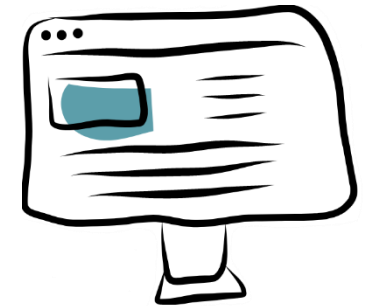
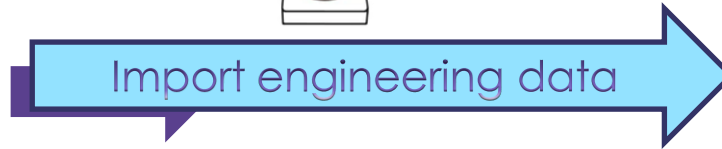
```
5376 </InfrastructureState>
5377 </InfrastructureStates>
5378 <topology>
5379 <netElements>
5380 <netElement id="ne_1" length="59.0">
5381 <relation ref="nr_496_1_1_0"/>
5382 <relation ref="nr_1_0_547_0"/>
5383 <relation ref="nr_1_1_734_0"/>
5384 <relation ref="nr_1_1_741_0"/>
5385 <associatedPositioningSystem id="ne_1_aps01">
5386 <intrinsicCoordinate id="ne_1_aps01_ic1" intrinsicCoord="0.0">
5387 <linearCoordinate measure="85205.0" positioningSystemRef="lps01"/>
5388 </intrinsicCoordinate>
5389 <intrinsicCoordinate id="ne_1_aps01_ic2" intrinsicCoord="1.0">
5390 <linearCoordinate measure="85265.0" positioningSystemRef="lps01"/>
5391 </intrinsicCoordinate>
5392 </associatedPositioningSystem>
5393 </netElement>
5394 <netElement id="n
5395 <relation ref="
5396 <relation ref="
5397 <associatedPositioningSystem id="ne_4_aps01">
5398 <intrinsicCoordinate id="ne_4_aps01_ic1" intrinsicCoord="0.0">
5399 <linearCoordinate measure="66420.0" positioningSystemRef="lps01"/>
5400 </intrinsicCoordinate>
5401 <intrinsicCoordinate id="ne_4_aps01_ic2" intrinsicCoord="1.0">
5402 <linearCoordinate measure="75406.0" positioningSystemRef="lps01"/>
5403 </intrinsicCoordinate>
5404 </associatedPositioningSystem>
5405 </netElement>
5406 <netElement id="ne_176" length="70.9">
5407 <relation ref="nr_176_0_585_0"/>
5408 <relation ref="nr_734_1_176_0"/>
5409 <associatedPositioningSystem id="ne_176_aps01">
5410 <intrinsicCoordinate id="ne_176_aps01_ic1" intrinsicCoord="0.0">
5411 <linearCoordinate measure="85432.0" positioningSystemRef="lps01"/>
5412 </intrinsicCoordinate>
5413 <intrinsicCoordinate id="ne_176_aps01_ic2" intrinsicCoord="1.0">
```

One railML document

Data engineering process

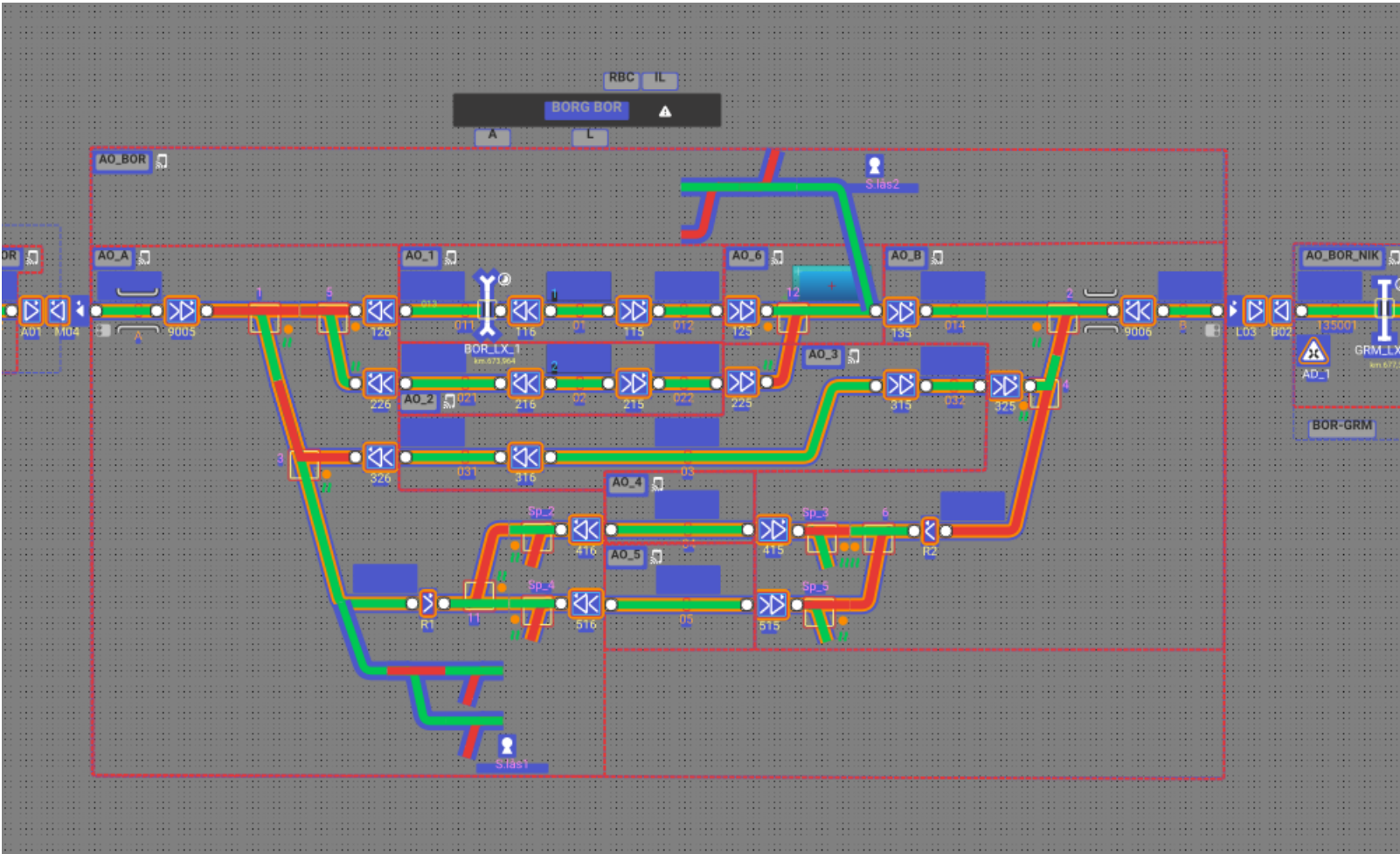
```
327 </InfrastructureStatus>
328 </InfrastructureDates>
329 <Topology>
330 <netElements>
331 <netElement id="ne_1" length="59.0">
332 <relation src="ne_496_1_1_0"/>
333 <relation src="ne_1_0_347_0"/>
334 <relation src="ne_1_1_734_0"/>
335 <relation src="ne_1_1_741_0"/>
336 <associatedPositioningSystem id="ne_1_ap01">
337 <intrinsicCoordinate id="ne_1_ap01_lc1" intrinsicCoord="0.0">
338 <linearCoordinate measure="8595.0" positioningSystemRef="1p01"/>
339 </intrinsicCoordinate>
340 <intrinsicCoordinate id="ne_1_ap01_lc2" intrinsicCoord="1.0">
341 <linearCoordinate measure="8283.0" positioningSystemRef="1p01"/>
342 </intrinsicCoordinate>
343 </associatedPositioningSystem>
344 </netElement>
345 <netElement id="ne_176" length="70.9">
346 <relation src="ne_176_0_565_0"/>
347 <relation src="ne_176_1_176_0"/>
348 <associatedPositioningSystem id="ne_176_ap01">
349 <intrinsicCoordinate id="ne_176_ap01_lc1" intrinsicCoord="0.0">
350 <linearCoordinate measure="8437.0" positioningSystemRef="1p01"/>
351 </intrinsicCoordinate>
352 <intrinsicCoordinate id="ne_176_ap01_lc2" intrinsicCoord="1.0">
```

railML document

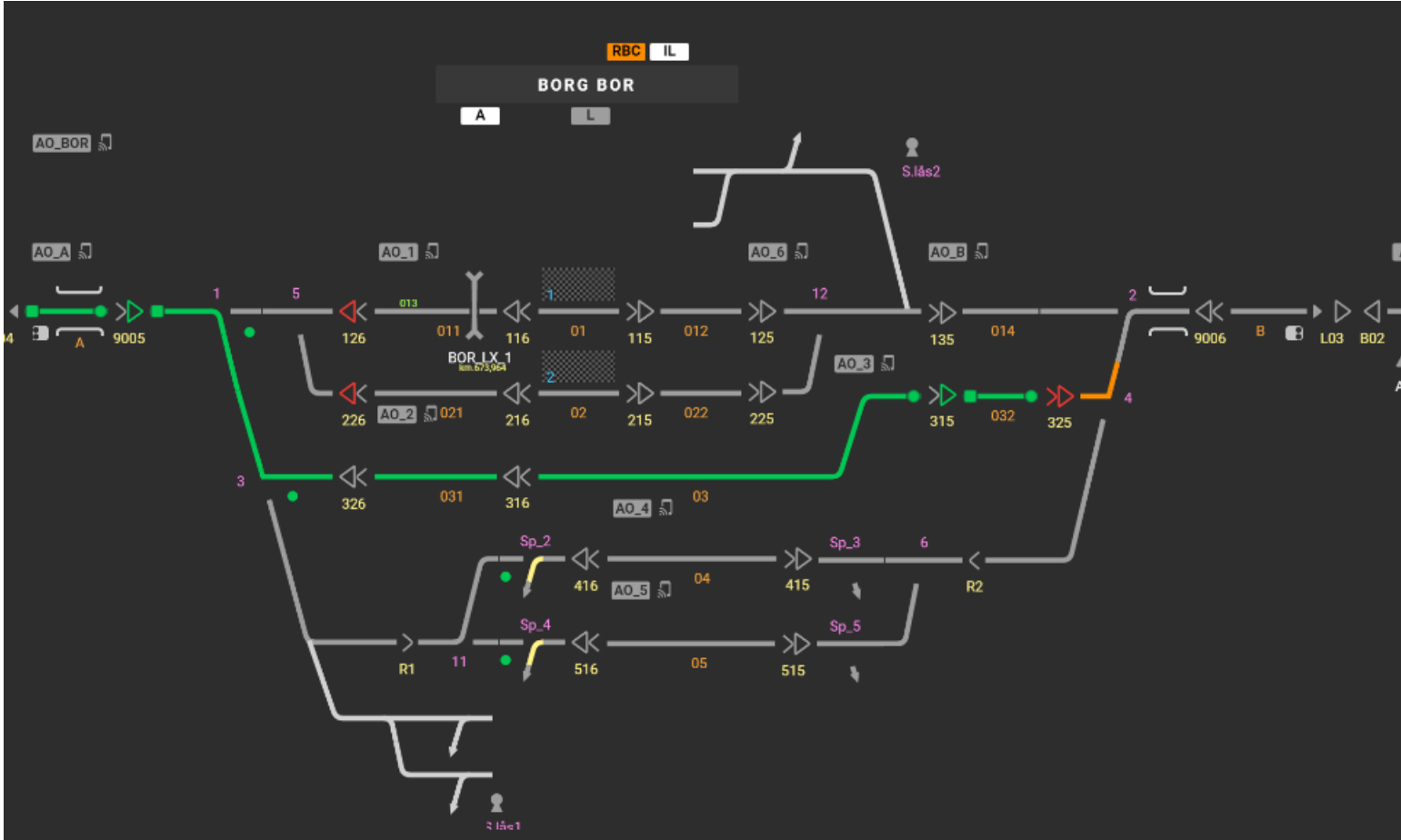


ARAMIS-I

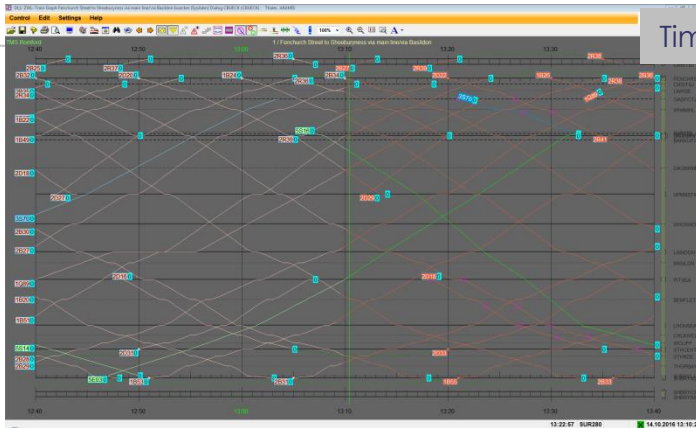
Schematic Track Layout view in ARAMIS-I



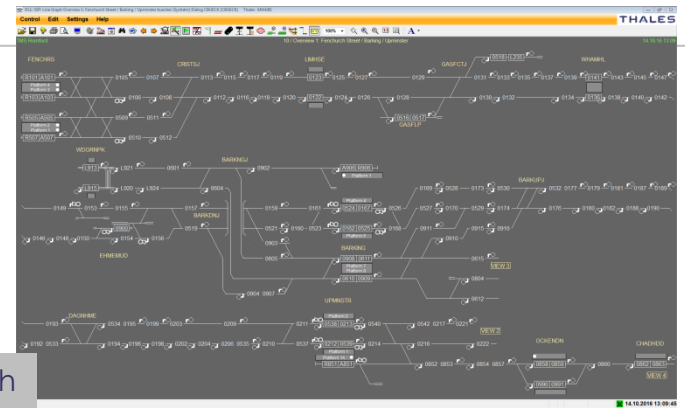
Schematic Track Layout on the TMS system



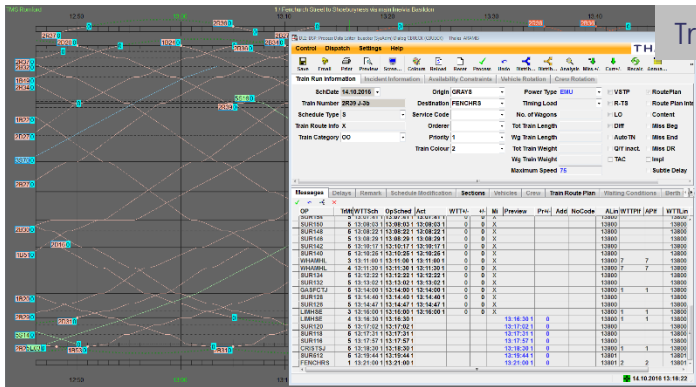
Example Graphs



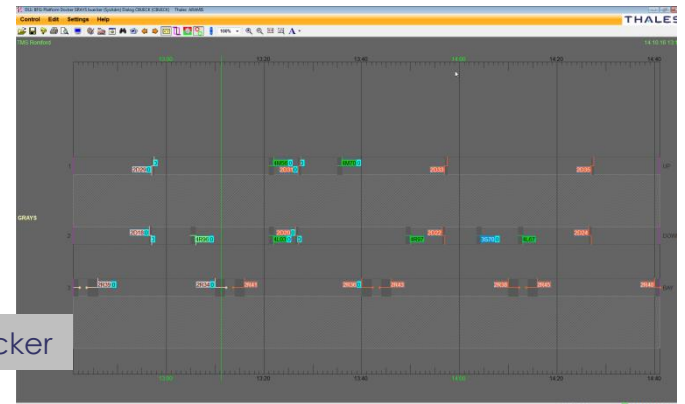
Time Distance Graph



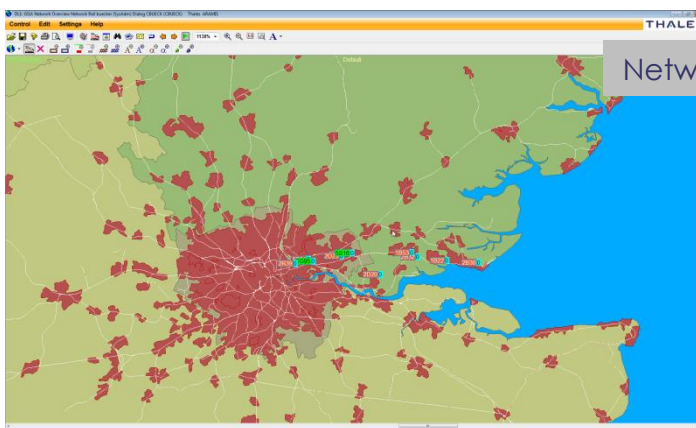
Line Graph



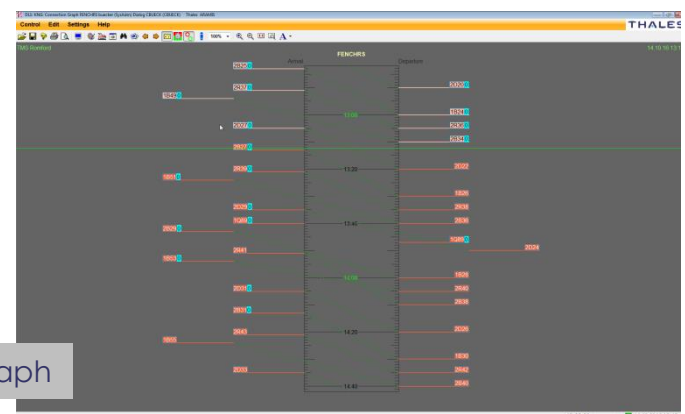
Train Run



Platform Docker



Network Map



Connection Graph

THALES



Vielen Dank

www.thalesgroup.com

